

Fords.

SALES | LETTINGS | NEW HOMES



Pavilion Court, Flat 14 185-197 Gordon Road, High Wycombe, Buckinghamshire, HP13 6AR

This contemporary two-bedroom property offers a harmonious blend of modern living and convenience.

Located just moments away from High Wycombe Town Centre, Rye Park, and the Mainline Station, this apartment is designed for those seeking a vibrant urban lifestyle.

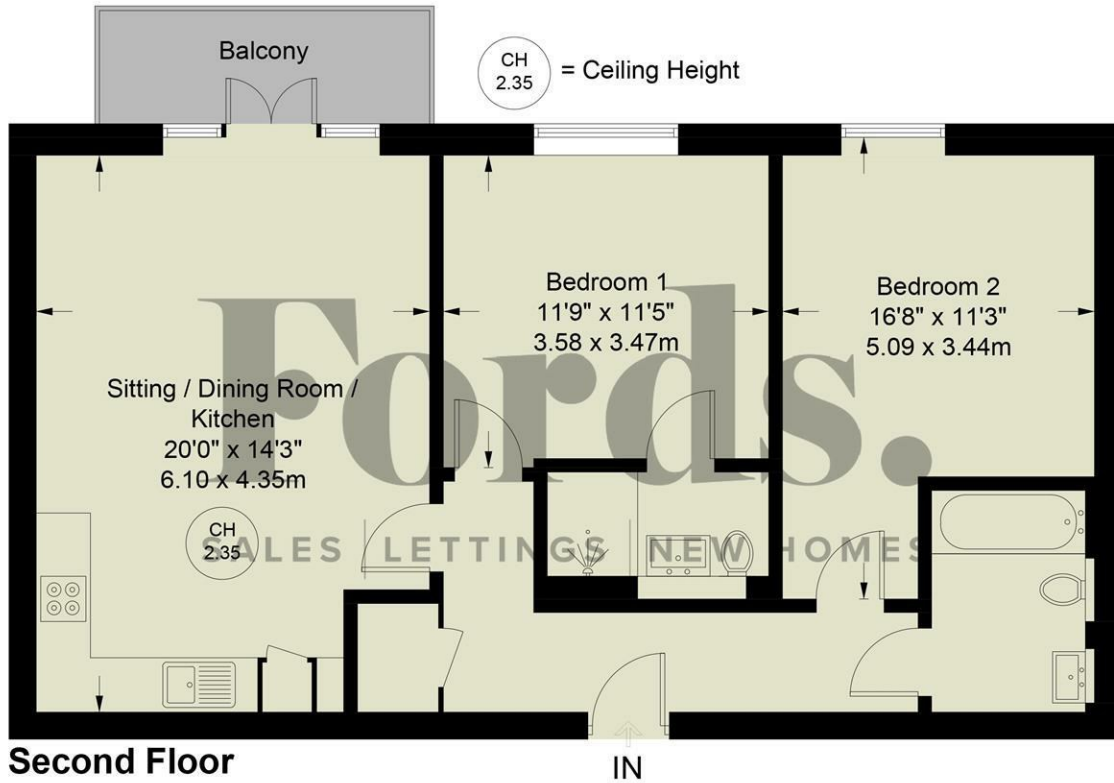
Residents also benefit from access to a communal garden and secure parking (*available for an additional £90 per month).

- Recently Constructed
- Two Large Double Bedrooms
- Principal Bedroom with Ensuite
- Far Reaching Views
- Balcony
- Communal Grounds
- Top Floor
- Close to Mainline Station
- Secure Residents Parking*
- Available Immediately!

£1,645 Per month

Gordon Road, HP13 6AR

Approximate Gross Internal Area = 784 sq ft / 72.8 sq m



Floor Plan produced for Ford & Partners by Media Arcade Ltd ©.

Illustration for identification purposes only. Window and door openings are approximate. Whilst every attempt is made to assure accuracy in the preparation of this plan, please check all dimensions, shapes and compass bearings before making any decisions reliant upon them.

Energy Efficiency Rating		Current	Potential
Very energy efficient - lower running costs			
(92 plus) A			
(81-91) B			
(69-80) C		76	76
(55-68) D			
(39-54) E			
(21-38) F			
(1-20) G			
Not energy efficient - higher running costs			
England & Wales		EU Directive 2002/91/EC	

Environmental Impact (CO ₂) Rating		Current	Potential
Very environmentally friendly - lower CO ₂ emissions			
(92 plus) A			
(81-91) B			
(69-80) C			
(55-68) D			
(39-54) E			
(21-38) F			
(1-20) G			
Not environmentally friendly - higher CO ₂ emissions			
England & Wales		EU Directive 2002/91/EC	



18 Crendon Street, High Wycombe, HP13 6LS

Tel: 01494 840 600 Email: sales@fordandpartners.com www.fordandpartners.com